

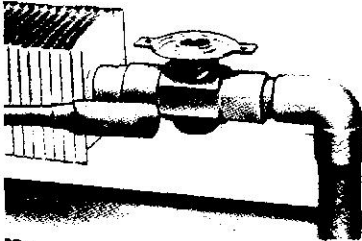


FLAIR

FLAIR INTERNATIONAL CORPORATION
600 OLD WILLETS PATH
HAUPPAUGE, NEW YORK 11788 U.S.A.
(516) 234-3600 FAX: (516) 234-3610

INSTALLATION INSTRUCTIONS

These instructions explain the proper installation and wiring procedures for all VJ ZONE-A-TROL Series Zone Valves and their related thermostats and replacement parts.



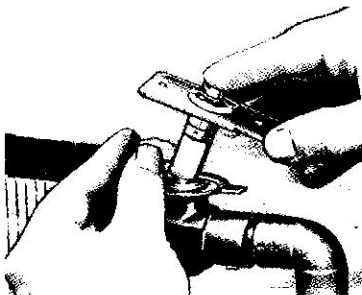
- 1 Solder valve body into supply or return side of piping. Be sure body is free of solder flux or other foreign material before stem is inserted. NPT bodies are threaded instead of soldered.

Application of excessive heat to valve body may cause damage.

4

- Before assembling operator to the valve, connect the wires from the proper thermostat and power supply as shown in appropriate wiring diagram.

Note: Actuators may be supplied with terminal screws or leads.



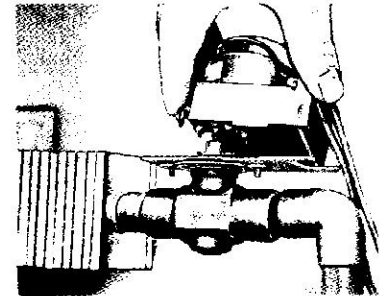
- 2 After the valve body has been installed, clean the stem cavity in the valve body, of all foreign matter. It is recommended that a snug fitting round wire brush be used to remove any debris from the cavity.

DO NOT APPLY GREASE TO STEM!
ALL COMPONENTS HAVE BEEN FACTORY LUBRICATED

5

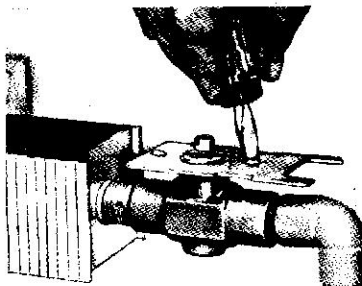
- With the stem in the open position, press operator drive shaft into snap lock of the stem. Operator should fit snugly. Entire operator and mounting plate assemblies should be able to "float".

Note: Do not attempt to rotate operator drive shaft manually. This will damage operator and void all warranties.



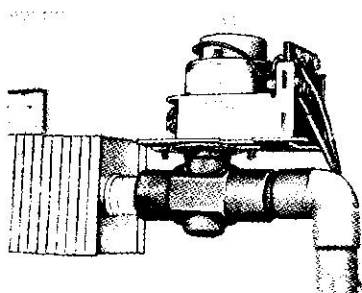
MANUAL OPERATION

In the event of a power failure, the valve may be opened or closed manually by removing the cover and lifting the operator straight up from the mounting plate. The valve stem may then be rotated to the desired position as indicated on the mounting plate. The unique arrow indicator shows the position of the valve stem at all times.



- 3 Attach the mounting plate to the valve body with the captive screws supplied. Mounting plate should be loose with screws fully seated. At this time, valve should be set in the "open" position.

CHECK OUT PROCEDURES



- 1 With all valves open, system should be flushed of all foreign material and dirt.
- 2 Turn thermostat to low temperature position. Valve should close.
- 3 Turn thermostat to high temperature position. Valve should open.
- 4 Set thermostat to desired temperature.

SPECIFICATIONS

MAX. SYSTEM PRESSURE (STATIC) 125 P.S.I.G.

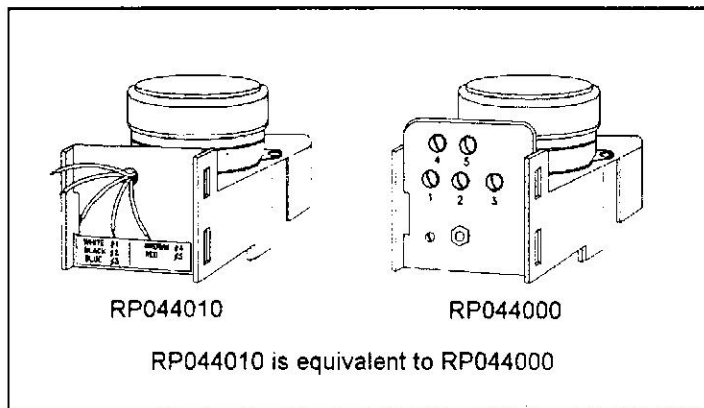
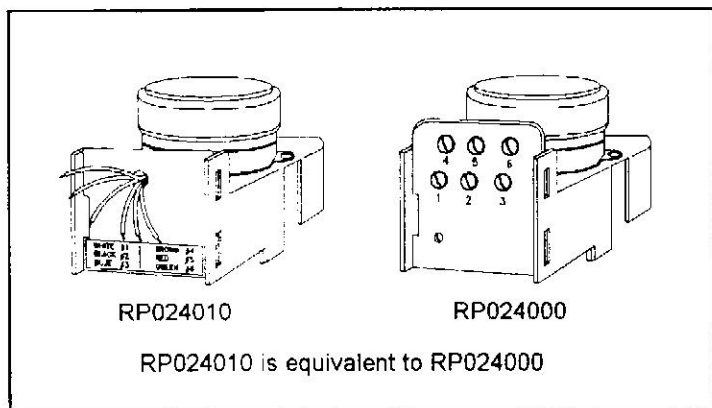
Max. Pressure Differential Across Closed Valve

1/2" Model	(92 ft./hd.) 40 p.s.i.g.
3/4" Model	(92 ft./hd.) 40 p.s.i.g.
1" Model	(58 ft./hd.) 25 p.s.i.g.
1 1/4" Model	(35 ft./hd.) 15 p.s.i.g.

ELECTRICAL RATING: 24 Volts AC, .3 amperes.

TIMING: Approximately 45 seconds from full open to full closed.

NOTE: Disconnect power supply if operator is to be removed.



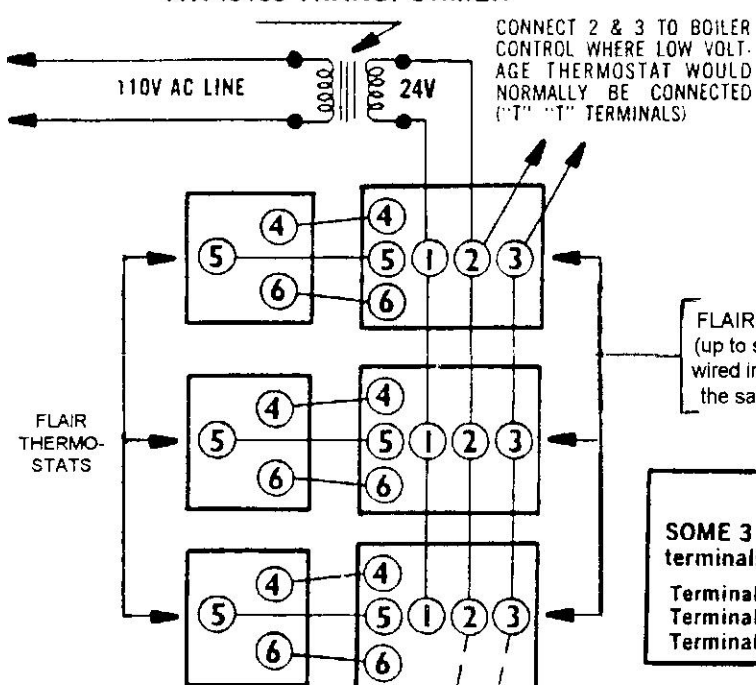
WIRING (RP024): red #1, black #2, blue or purple #3, brown or grey #4, red #5, green or yellow #6.

WIRING (RP044): white #1, black #2, blue or purple #3, brown or grey #4, red or orange #5.

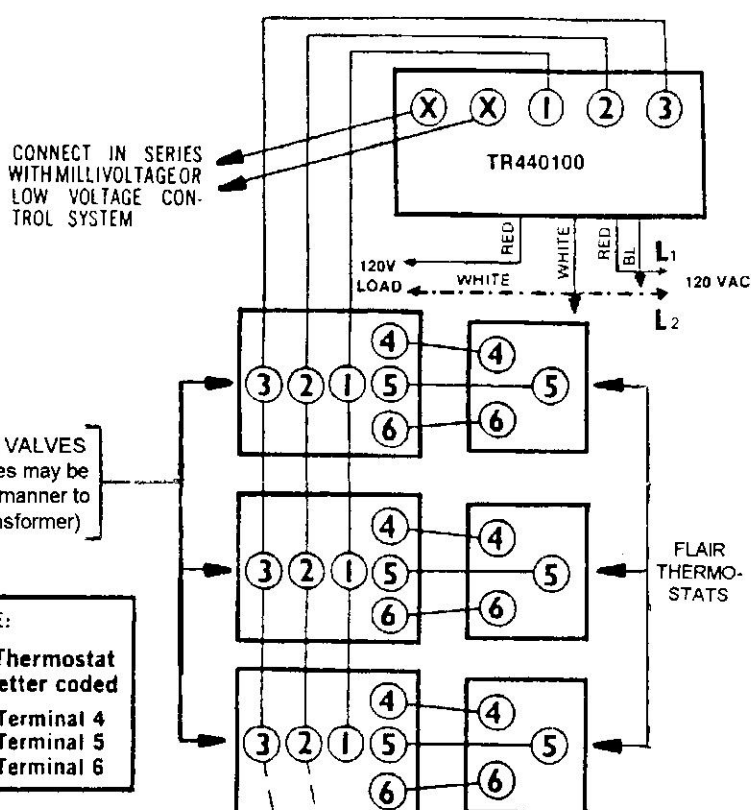
SYSTEM WITH PLATE MOUNTED TRANSFORMER

(FOR CONSTANT CIRCULATION, DO NOT USE TERMINAL #3)

TR140100 TRANSFORMER

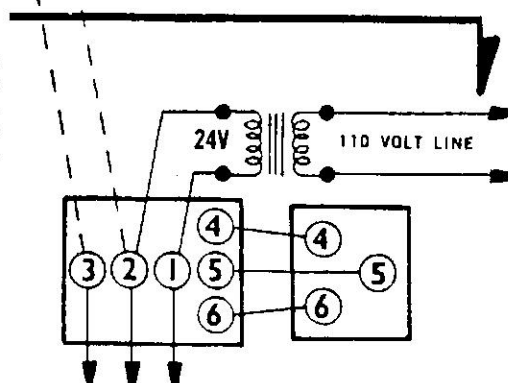
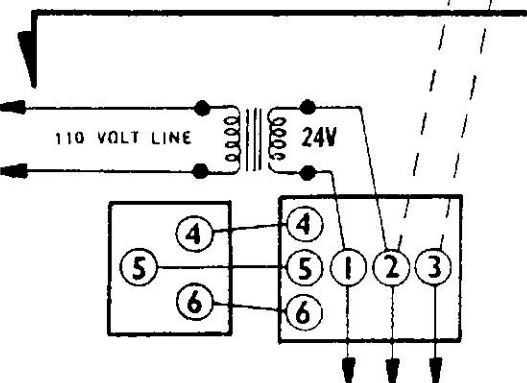


SYSTEM WITH RELAY TRANSFORMER



TO ADDITIONAL ZONES

When more than 6 Zone-A-Trol Valves are used, an additional TR140100 (40VA) transformer must be provided to power additional valves. Each 40VA Transformer will power six valves and should be wired into circuit as shown in diagram which indicates no connection is made between the No. 1 terminals of sixth and seventh zone valves.



NOTE: RP044 and RP044010 replacement (5-wire) operators and thermostats with 2-wire control circuits do not have a number 6 terminal. RP024 and RP024010 use a 3-wire control circuit. Operators for VK series valves did not have a #3 terminal but are replaced with actuators that do have a #3 terminal.